

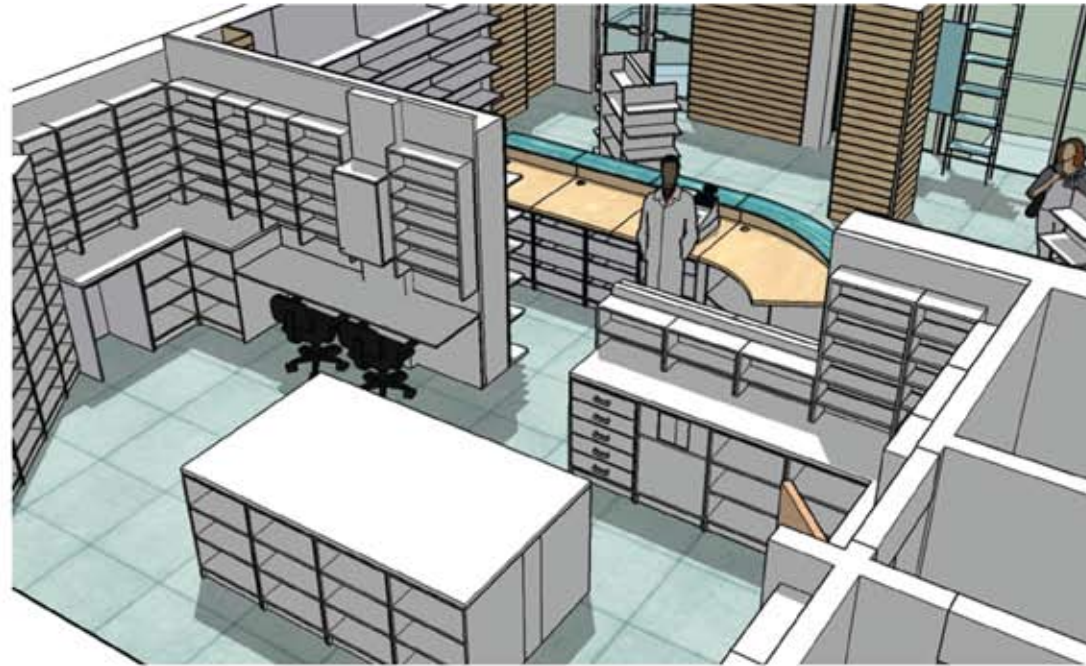
# CASE STUDY: Twyford Medical Practice

## Client Brief:

The Practice Manager contacted Ken Rand Partners by recommendation because they were extending and altering the existing practice which involved relocation of the existing dispensary.

The plan had to allow for the dispensary to evolve into a fully fledged retail pharmacy to serve the local community. The requirement was for a highly professional dispensary along with a high spec retail shop.

## Concept Visuals



**Ken Rand Partners**  
*Your Vision, Our Promise*

Unit C6 Endeavour Business Park  
Penner Road, Havant  
Hampshire PO9 1QN

T 0844 357 8485

W [kenrand.co.uk](http://kenrand.co.uk)

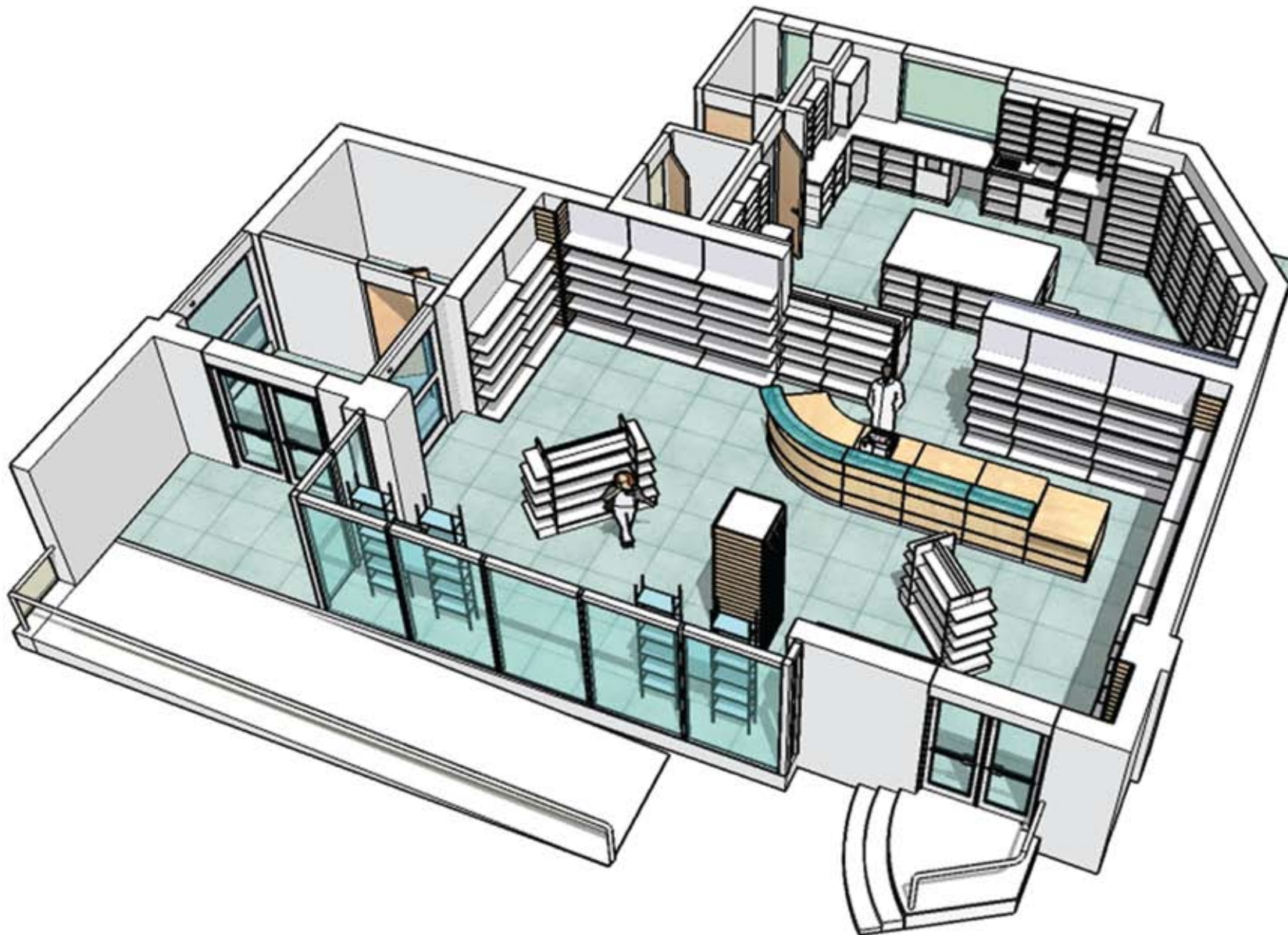
W [kenrandfurniture.co.uk](http://kenrandfurniture.co.uk)

Client Twyford Medical Practice  
Location Winchester, Hampshire  
Project type Retail Pharmacy  
Completion April 2007  
Project no. V029

# CASE STUDY:

## Twyford Medical Practice

### Layout Plan



**Ken Rand Partners**  
*Your Vision, Our Promise*

Unit C6 Endeavour Business Park  
Penner Road, Havant  
Hampshire PO9 1QN

T 0844 357 8485  
W [kenrand.co.uk](http://kenrand.co.uk)  
W [kenrandfurniture.co.uk](http://kenrandfurniture.co.uk)

Client Twyford Medical Practice  
Location Winchester, Hampshire  
Project type Retail Pharmacy  
Completion April 2007  
Project no. V029

# CASE STUDY:

## Twyford Medical Practice

### Building Process:



### Design Response:

In response to the client brief Ken Rand Partners produced a fully fledged retail pharmacy of a high standard and quality to serve the local community.

The general impression we endeavoured to achieve through our design is clean, modern and welcoming without being clinical. The design of the pharmacy will appeal to all of the demographic groups that will make use of the facility.

The professional design of the dispensary is organised and ordered to promote ease of use and ensure that its operation is highly effective.

Ken Rand Partners assisted the client in generating a design brief to which a design concept and layout plans were produced.

There was client involvement throughout the process ensuring all requirements were met and expectations exceeded.

We project managed the fit-out throughout the process ensuring completion was on time and within budget.



**Ken Rand Partners**  
*Your Vision, Our Promise*

Unit C6 Endeavour Business Park  
Penner Road, Havant  
Hampshire PO9 1QN

T 0844 357 8485

W [kenrand.co.uk](http://kenrand.co.uk)

W [kenrandfurniture.co.uk](http://kenrandfurniture.co.uk)

Client: Twyford Medical Practice  
Location: Winchester, Hampshire  
Project type: Retail Pharmacy  
Completion: April 2007  
Project no.: V029



**Ken Rand Partners**  
*Your Vision, Our Promise*

Unit C6 Endeavour Business Park  
Penner Road, Havant  
Hampshire PO9 1QN

T 0844 357 8485  
W [kenrand.co.uk](http://kenrand.co.uk)  
W [kenrandfurniture.co.uk](http://kenrandfurniture.co.uk)

Client: Twyford Medical Practice  
Location: Winchester, Hampshire  
Project type: Retail Pharmacy  
Completion: April 2007  
Project no.: V029

## CASE STUDY: Twyford Medical Practice Finished Photographs:



All case study material is sole copyright of Ken Rand Partners and must not be used or reproduced in full or part without express written authority.

### Client Testimonial:

*"Ken Rand Partners involved us throughout the process and took on board all the suggestions made. The level of communication and clarity of information between us was kept at a high standard through to the completion of the project."*

*"I find Ken Rand Partners extremely professional, easy and a pleasure to work with."*